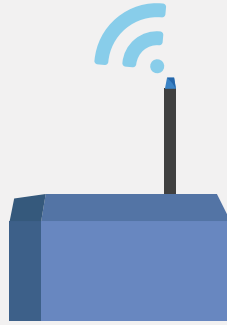


An isometric illustration of a water treatment plant. It shows several blue buildings, some with "acme" logos. There are stacks of grey cylindrical tanks, a central blue rectangular tank with a Wi-Fi symbol above it, and several large circular tanks. A road with a barrier and a gate is visible on the left, and a forest of green trees is at the bottom. Small human figures are scattered throughout the scene to provide scale.

IpnMiner

Measurement system



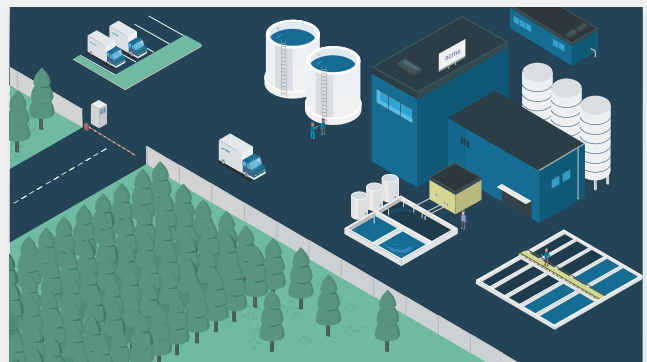
IpnMiner

Measurement system

System designed to use in industrial environment. It is based on certified LoRa module. **IpnMiner** uses LoRaWAN standard to communicate with other devices. It makes IpnMiner energy efficient system which can work on **battery** power supply for a **long time**. To increase independence from a permanent power source our engineers designed dedicated **energy harvesting** shield for IpnMiner. It uses energy received from a **solar panel** and allows to accumulate it. IpnMiner is resistant to environmental conditions due to an arrangement in the housing, which meets the IP65 standard.



engineers working on IpnMiner



IpnMiner installed in industry 4.0

What does IpnMiner offer?

- ARM core CPU
- LoRaWAN support
- on-board temperature measurement
- energy consumption monitoring
- isolated digital inputs and outputs
- energy harvesting
- IP65 case
- power: 12-24V DC input or internal battery
- sensor can be powered by the node

Where IpnMiner can be used?

- Outdoor temperature and humidity measurement
- Internal environment condition control [temperature and humidity]
- Flowmeters support
- Tank level measuring
- Consumed current monitoring
- Pollution detection
- Presence detection

Supported Interfaces

- RS485
- MODBUS
- 4-20mA current loop
- 1-Wire



IpnMiner photography

There is a possibility to integrate IpnMiner with any device supporting the above-mentioned interfaces and having a documented protocol. So nothing prevents you from using it for tasks not mentioned in this paper. If you have any idea how you can use IpnMiner for your needs, contact us.

One step ahead



Powerful connection of this product give you possibilities for

- Tank content registration
- Office environment monitoring
- Energy usage control
- Room presence mapping
- Automated delivery system
- Suspicious behavior monitoring
- Hazardous substances detecting





lpnplant.io